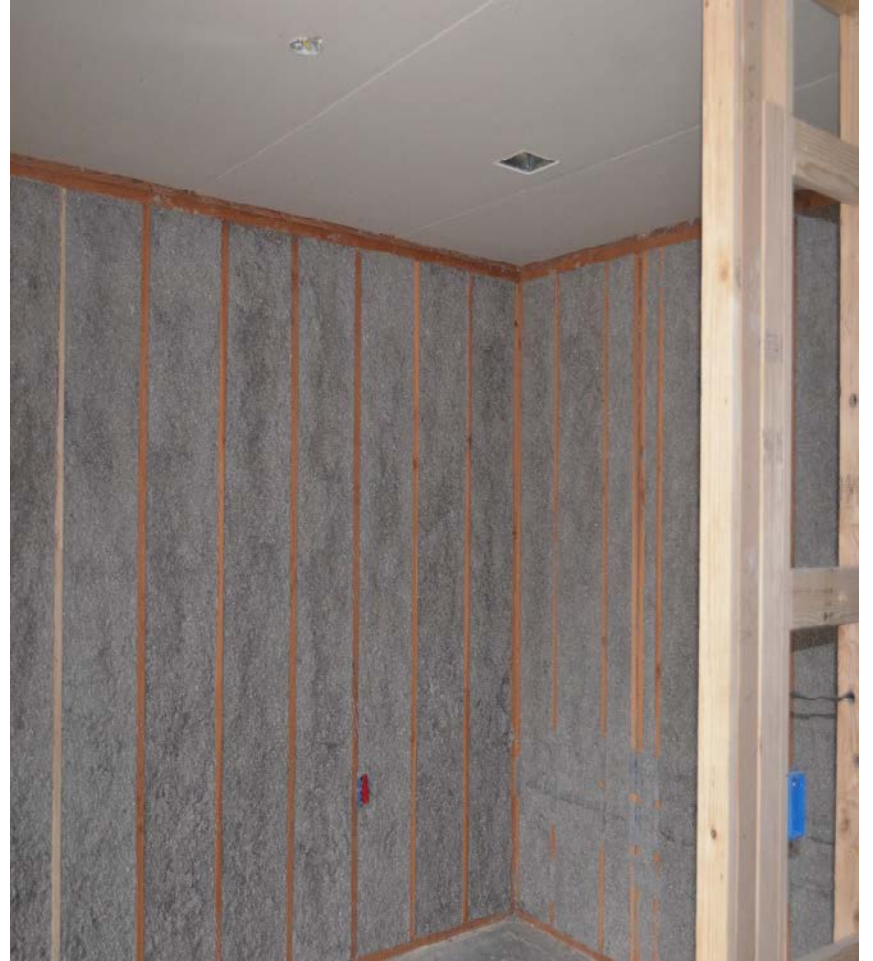
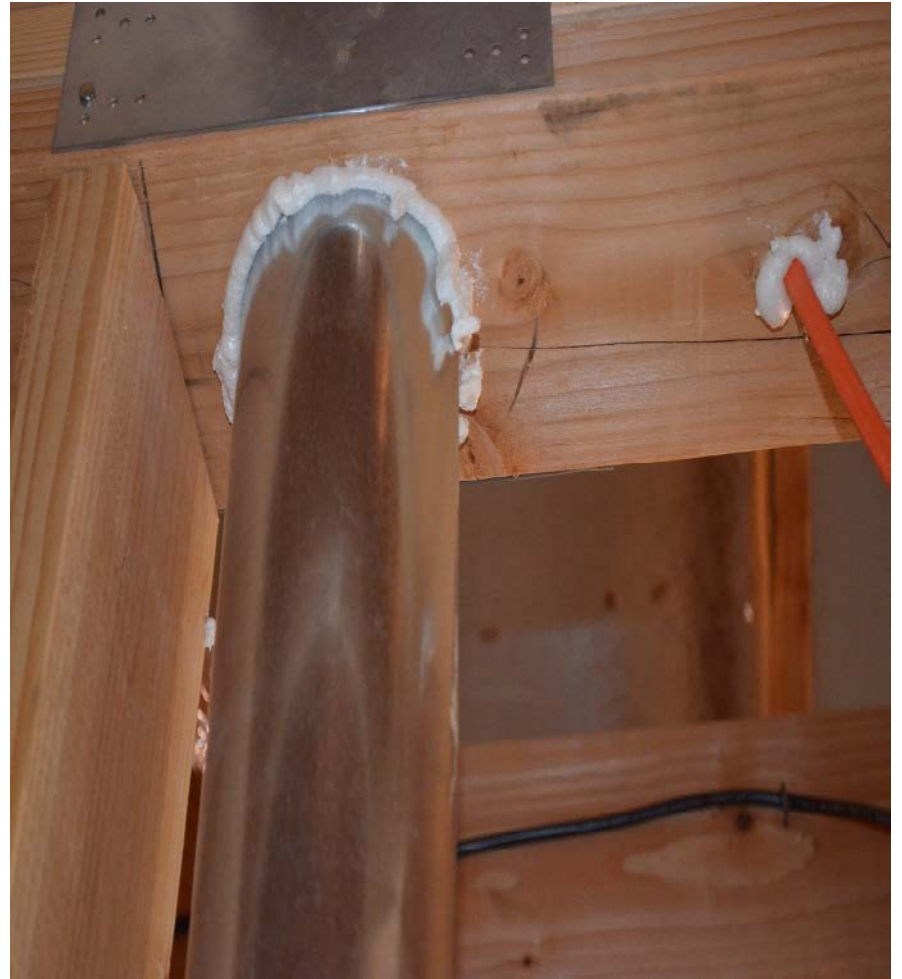


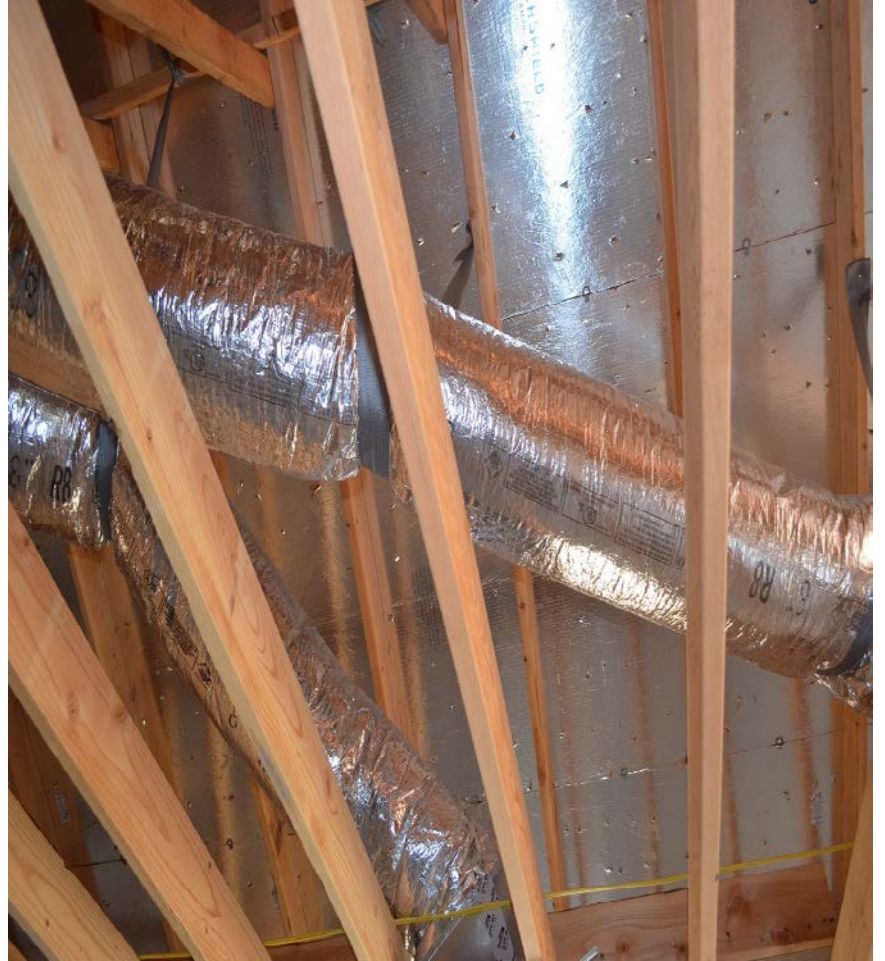
Blackledge &
Associates Architects



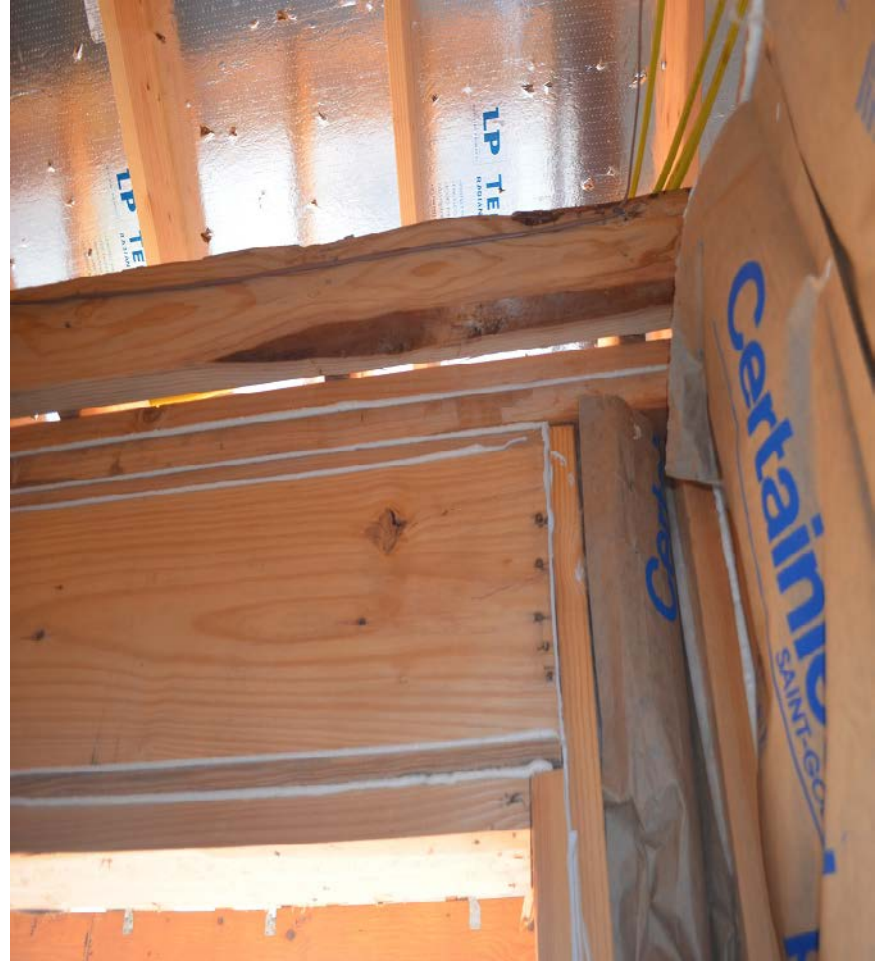
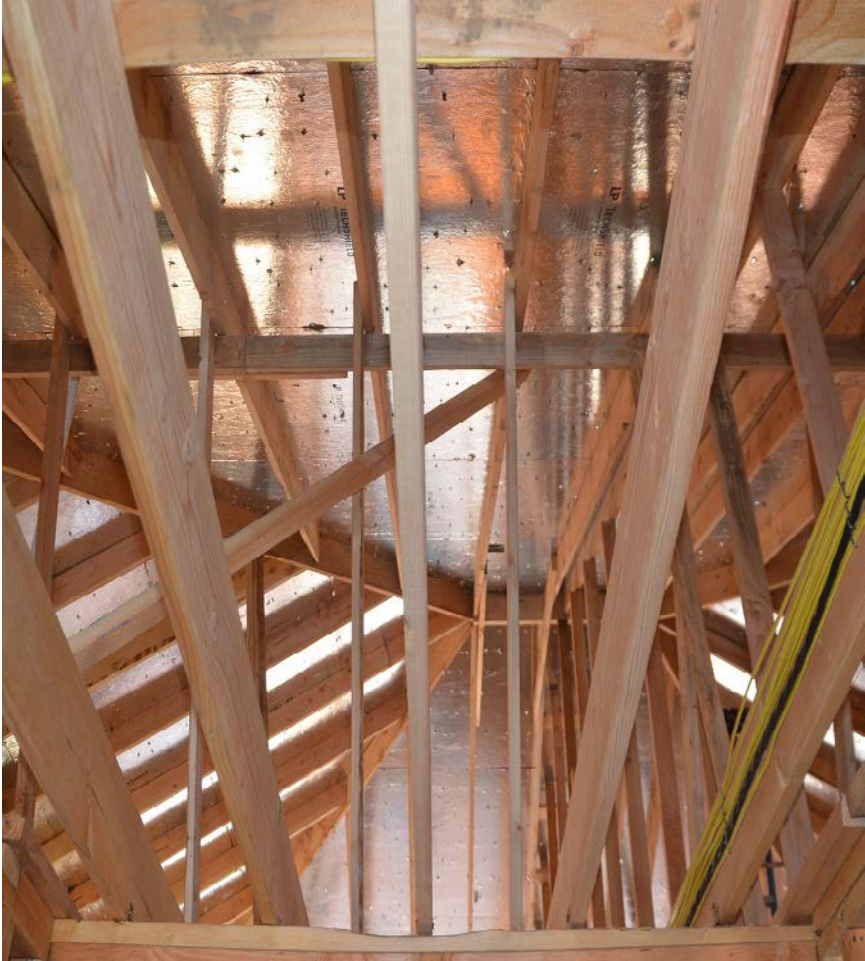















HIGH PERFORMANCE
LOWE GLASS

In Highlighted Regions

| | |
|---|--|
|  ENERGY STAR |  BR Qualified |
|  National Fenestration Rating Council CERTIFIED | EW7 Products 343.095 SH Single Hung (Vinyl) EW7: SB70 / ARG90 / CLR (3MM/3MM) - 3/4" IG EWG-K-9-02645-00004 |
| ENERGY PERFORMANCE RATINGS | |
| U-Factor (U.S.A-P) 0.28 | Solar Heat Gain Coefficient 0.22 |
| ADDITIONAL PERFORMANCE RATINGS | |
| Visible Transmittance 0.50 | Air Leakage ≤ 0.3 cfm/ft² |

Manufacturer: All ratings based on these ratings criteria for application. NFRC procedures for determining whole window product performance. NFRC ratings are determined for a fixed unit of window under standard conditions and a specific product size. NFRC does not recommend any product and does not warrant the suitability of any product.







































The Plaza
Management Office
→

♿
PARKING
2.0













STOP

HIXON

HIXON

HIXON

EXTREME







